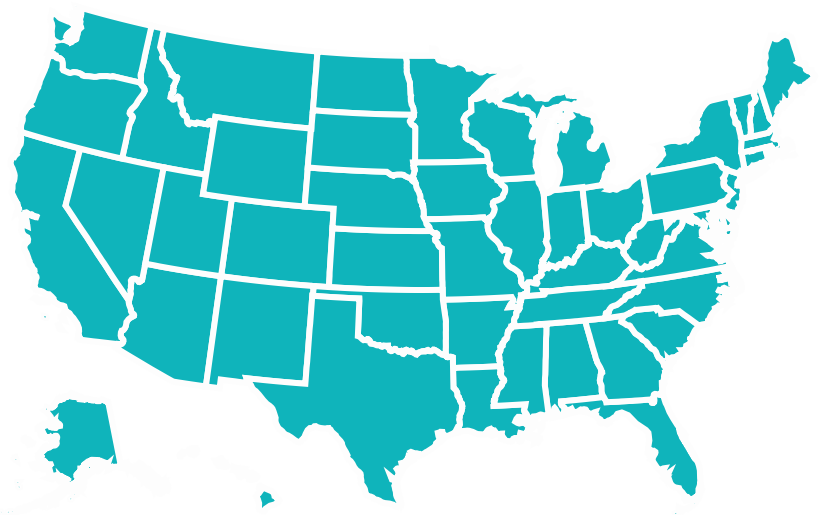


Kentucky Autism Prevalence



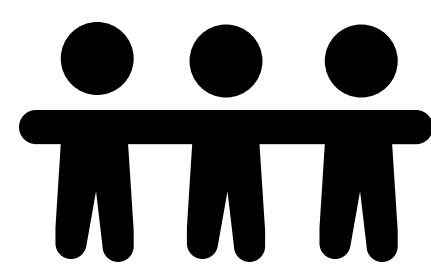
Autism Estimates Based on 2019 US Census Data



1 in 54 people are autistic in the United States

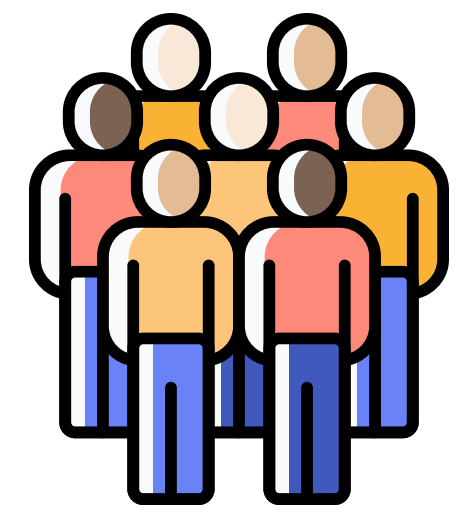
Kentucky State Population Estimates

July 2019



Total population

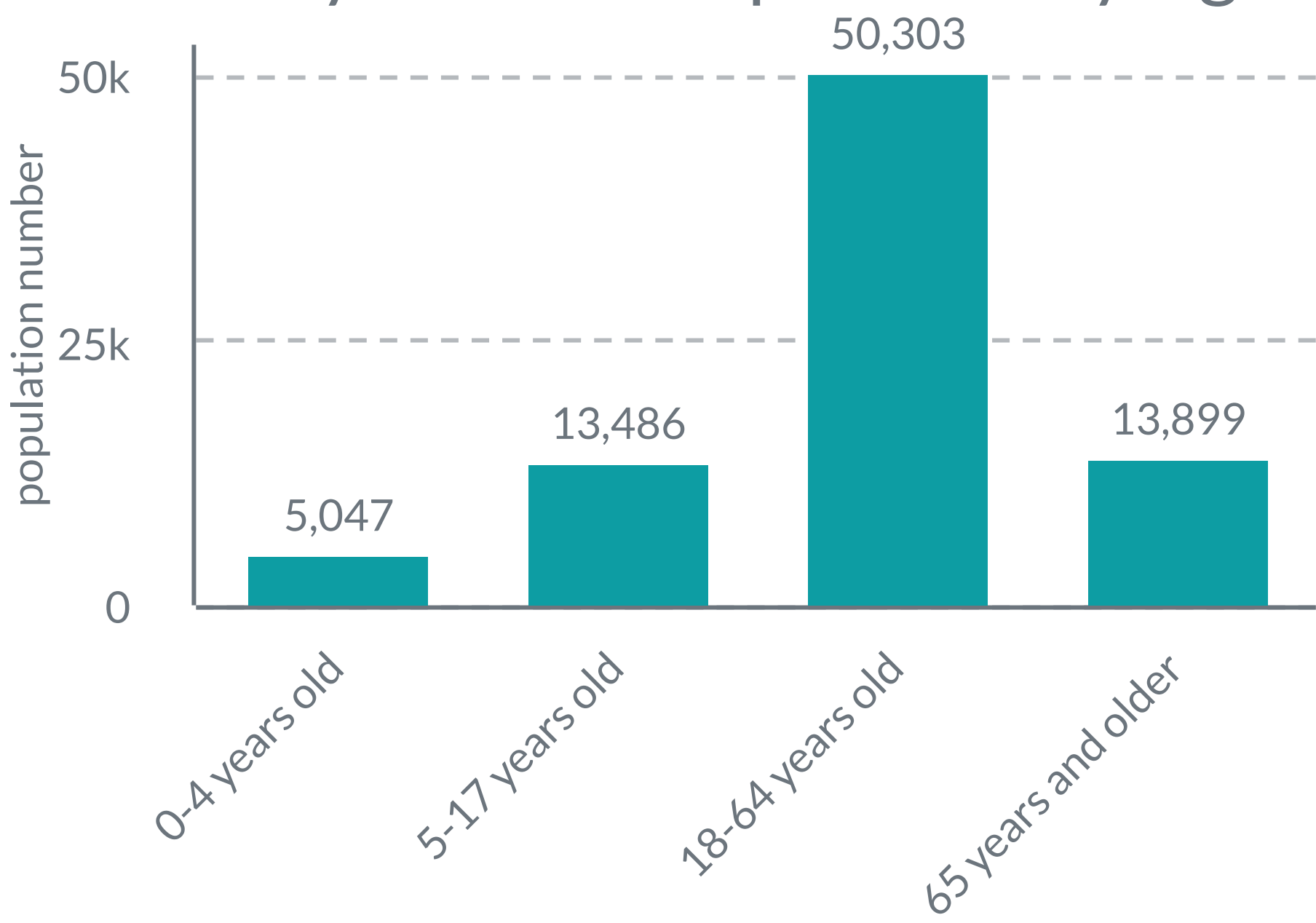
4,467,673



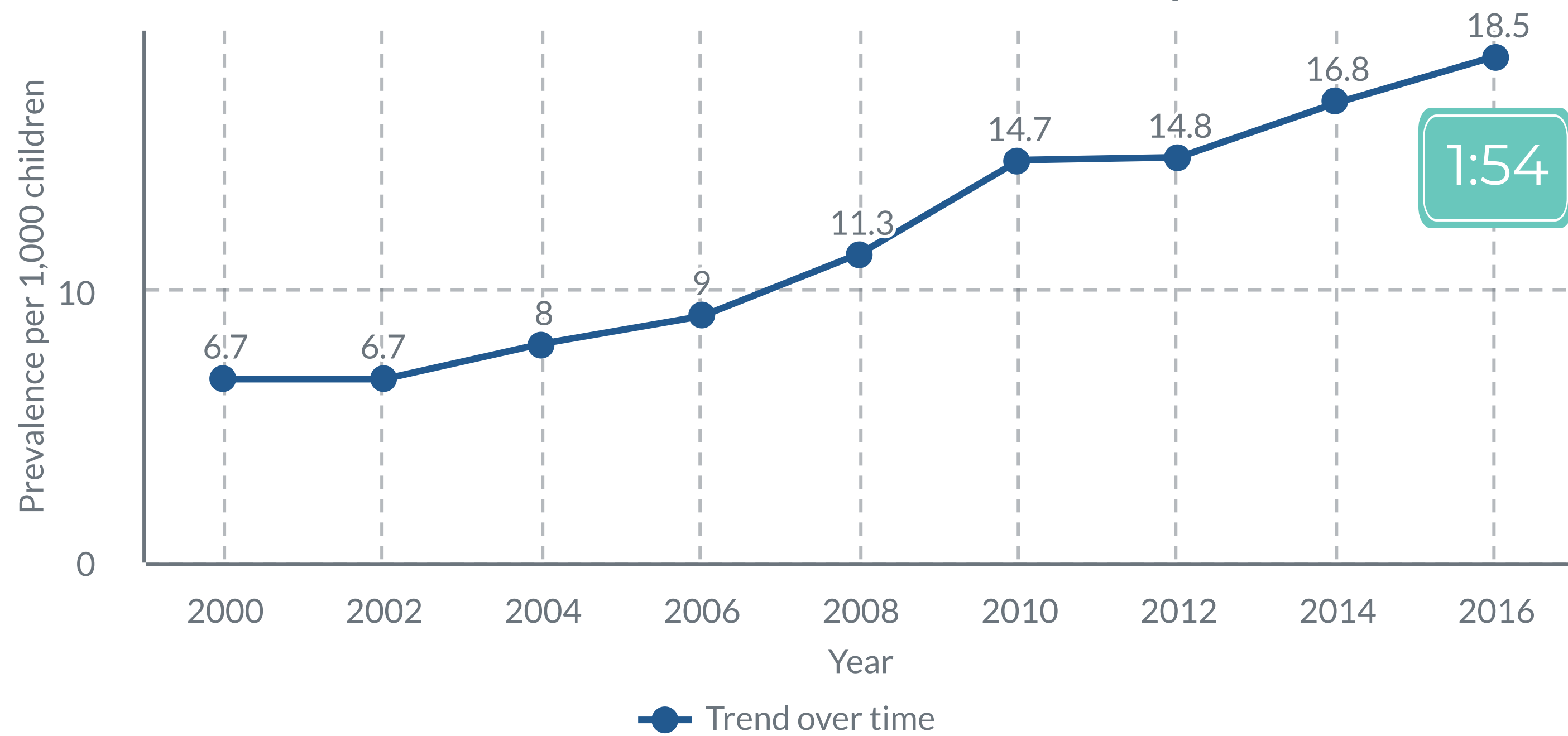
It is estimated there are

82,735 autistic people in Kentucky

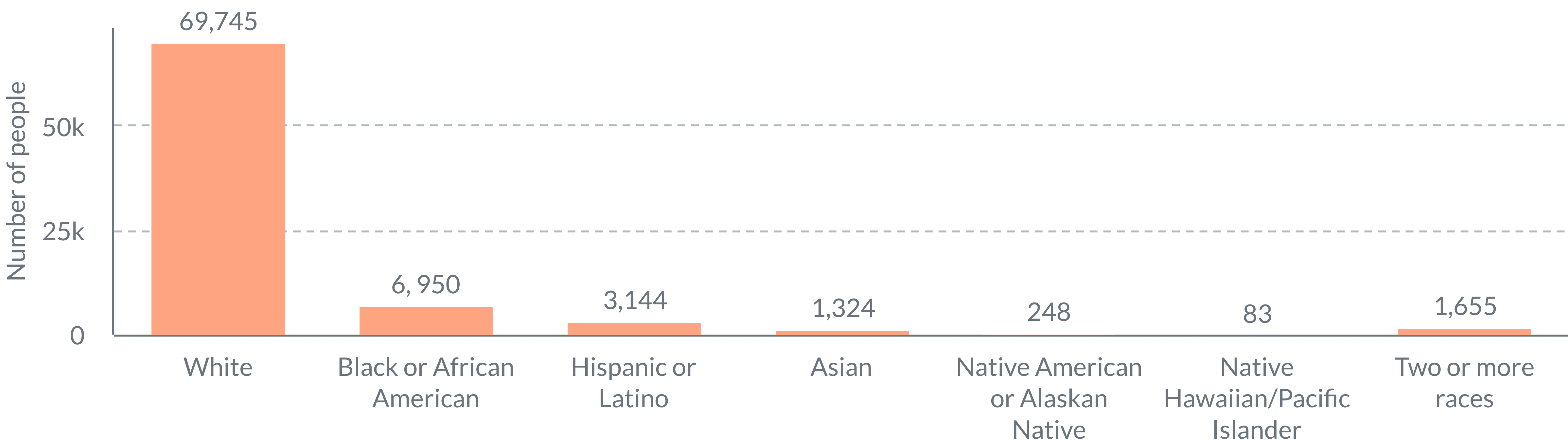
Kentucky Autistic Population by Age



ADDM National Autism Prevalence Report Data



Kentucky Autistic Population by Race



**From
2013-2014
to
present**

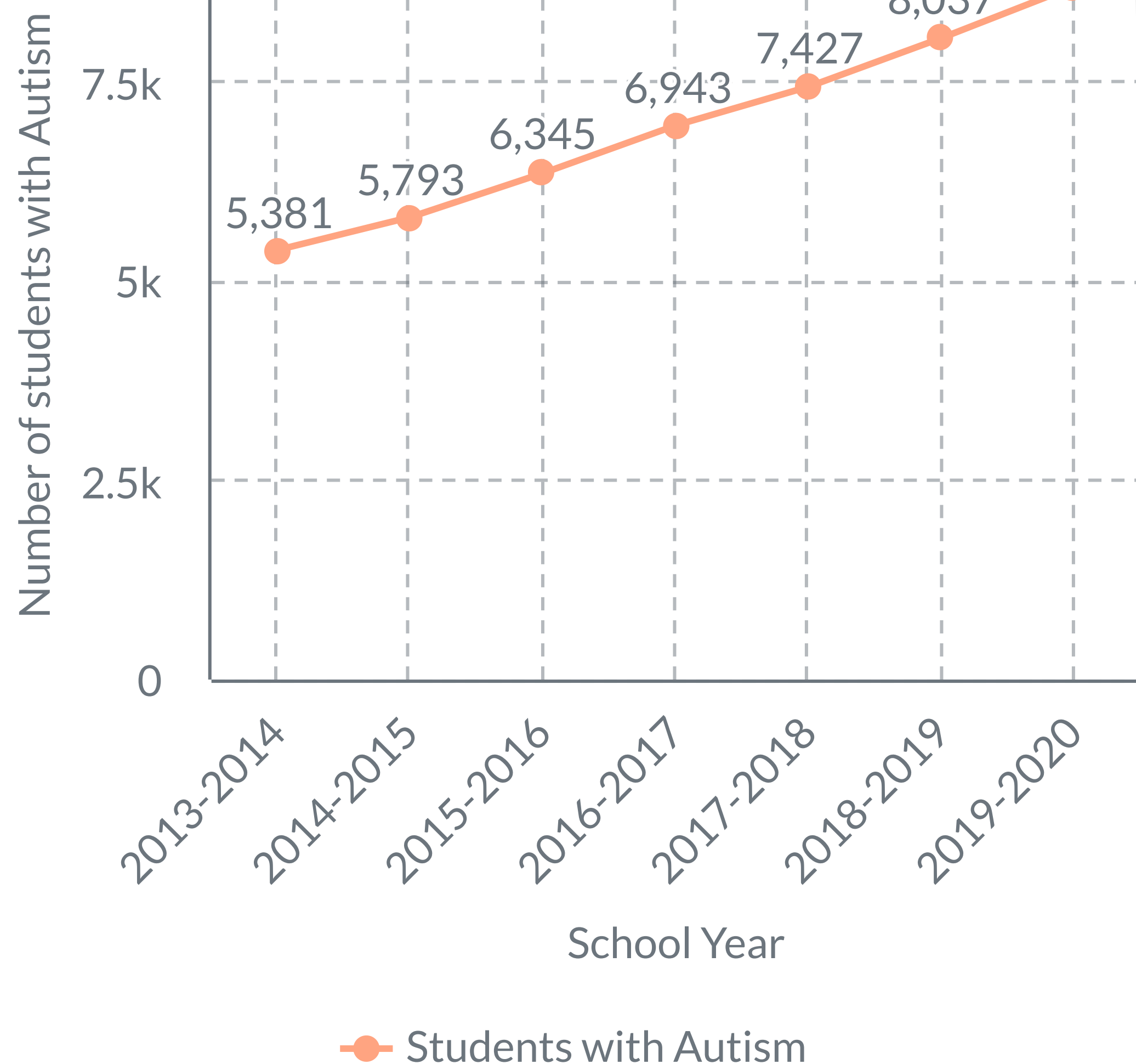
61% increase in the number of students with autism

This could partially be attributed to:

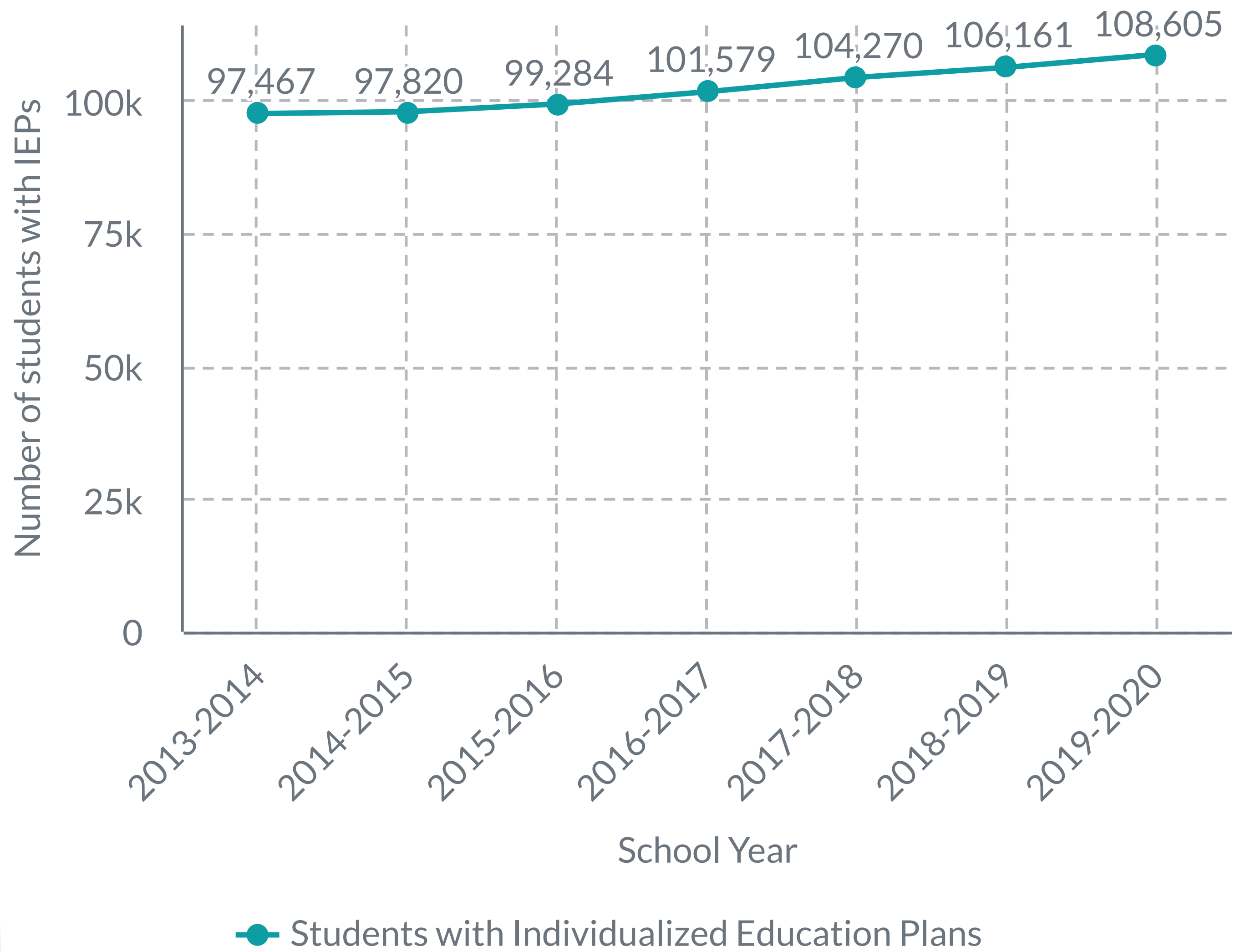
- Collaborative efforts by Kentucky Advisory Council on Autism (KYACA), Office of Autism, and KY Learn the Signs Act Early Ambassadors to promote early identification.
- KYACA and Office of Autism's support of Kentucky Autism Training Center Autism Diagnostic Observation Schedule, Second Edition (ADOS-2) training for school psychologists and other behavioral health providers annually.
- KDE, Office of Autism, and KYACA partners created and published 2017 KDE Autism Guidance Document



KDE students ages 3-21 with Autism



KDE students ages 3-21 with IEPs



For more
resources,
visit

www.kyaca.org

- All data estimates on the first page of this tool are based on the latest CDC National Prevalence Data that an estimated 1.85 percent (about 1 in 54) of a national sample of 8-year-old children have ASD. The autism trend chart is based on the same study of a national sample of 8-year-old children. In a separate study using extrapolated data, the CDC has estimated similar prevalence rates for adults.
- Kentucky Autism Prevalence Data utilize the national CDC estimates applied to U.S Census estimates for 2019.
- School data are from the Kentucky Department of Education (KDE) Child Count Data.
- For a listing of all KY estimates, click this link: [2019 Population and Autism Estimates for Kentucky Counties](#)
- Click this link for [2017 KDE Autism Guidance Document](#)

This infographic was created through a collaboration between these partners



Kentucky Public Health
Prevent. Promote. Protect.



Kentucky Career Center
Vocational Rehabilitation

